



# 11<sup>th</sup> EUROPEAN DEAF ORIENTEERING CHAMPIONSHIP

13 - 17 October 2026  
Serres, Greece

Bulletin Vol. 1



ΠΕΡΙΦΕΡΕΙΑΚΗ  
ΕΝΟΤΗΤΑ  
ΣΕΡΡΩΝ

# Contents

1. Welcome.....	3
2. Event program.....	5
3. Rules.....	5
4. Venus and Embargoed Areas.....	6
• <b>Tuesday 13 October 2026, training opportunity</b>	
• <b>Wednesday 14 October 2026, Middle distance</b>	
• <b>Thursday 15 October 2026, Long distance</b>	
• <b>Saturday 17 October 2026, Relay</b>	
5. Opportunities for training.....	9
6. Punching system.....	9
7. Weather and climate.....	9
8. Clothing.....	9
9. Event Center.....	9
10. Entries.....	9
11. Entry fees and payment.....	10
• <b>Accommodation</b>	
• <b>Accommodation for training camp</b>	
• <b>Entry fees</b>	
• <b>Transportation</b>	
12. Accreditation.....	13
13. Anti-doping.....	13
14. Health services.....	13
15. Visa.....	13

# 1. Welcome



Serres, valley of Agioi Anargiroi

Hellenic sports federation for deaf people and the orienteering club O-Siris are glad to invite you to the 11th European Deaf Orienteering Championships (EDOC 2026) which will take place on the 12th to 18th October 2026 in Serres, Greece. Despite the fact that it is the first major orienteering event in our country, we will try to provide high quality, challenging and fair competition for all participating athletes. We are looking forward to seeing you in our hospitable region! More information about Serres and the region of central Macedonia, you can find below:

<https://www.serres.gr/en/>

<https://www.pkm.gov.gr/p-e-serron/>

<https://visit-centralmacedonia.gr/en/where-to-go/60/1-serres>

Moreover, organizers invite you to the World Deaf Orienteering Cup #3 that will take place simultaneously with EDOC 2026. Orienteering club O-Siris offers another opportunity for open orienteering competition (EDOC Tour) after the finish of each day of EDOC 2026 & WDOCup on the same terrains.

Serres, valley of Agioi Anargiroi



Serres, panoramic view



# 2. EVENT PROGRAM

## PRELIMINARY EVENT PROGRAM

Day	Date	Activity
Monday	12 Oct.	Arrival
Tuesday	13 Oct.	Arrival, training opportunity (Agioi Anargiroi valey), Opening Ceremony (Serres)
Wednesday	14 Oct.	Middle distance (Nerotopos, 14th km Serres to Lailias ski center)
Thursday	15 Oct.	Long distance (Ai Giorgis valey, Serres)
Friday	16 Oct.	Rest Day & touristic excursion
Saturday	17 Oct.	Relay (Lailias ski center), Closing Ceremony & party (Serres)
Sunday	18 Oct.	Departure

# 3. RULES

The competitions (EDOC 2026 & WDOCup #3) will be conducted in accordance with the IOF rules and the Technical Regulations for orienteering published by EDSO. Unforeseen incidents not covered by the rules will be resolved by organizing committee and the jury accordingly.

## Jury

The members of the jury will be announced.

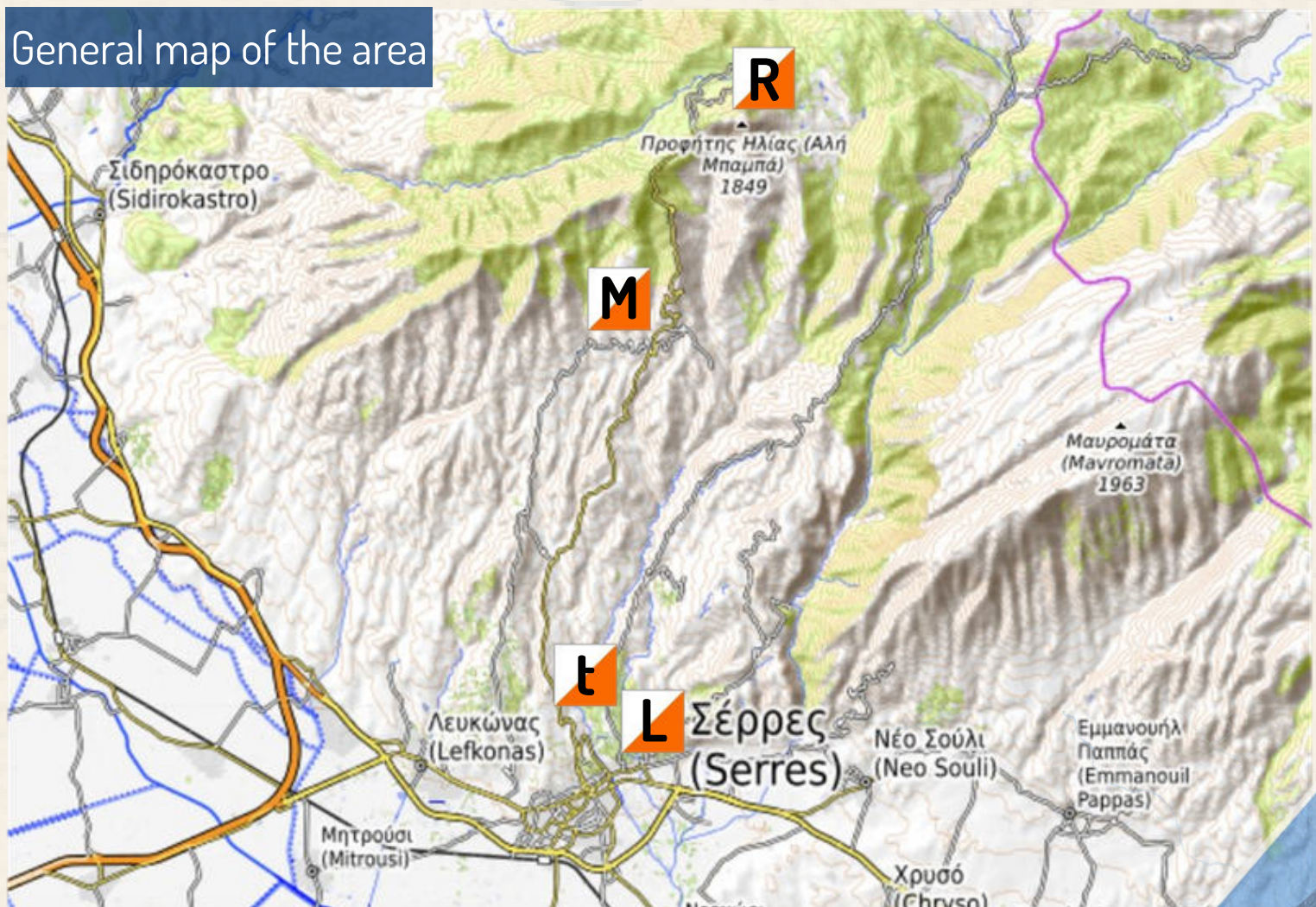
# 4. VENUS AND EMBARGOED AREAS

The competition will take place next to Serres and its surroundings. According to IOF competition rules (26.5), embargoed areas are forbidden to train or survey for all potential athletes, team officials and other persons, who through knowledge of the terrain may affect the results of the competition.

Interactive map of the embargoed areas and other information below :

 <https://shorturl.at/AYEIG>

General map of the area



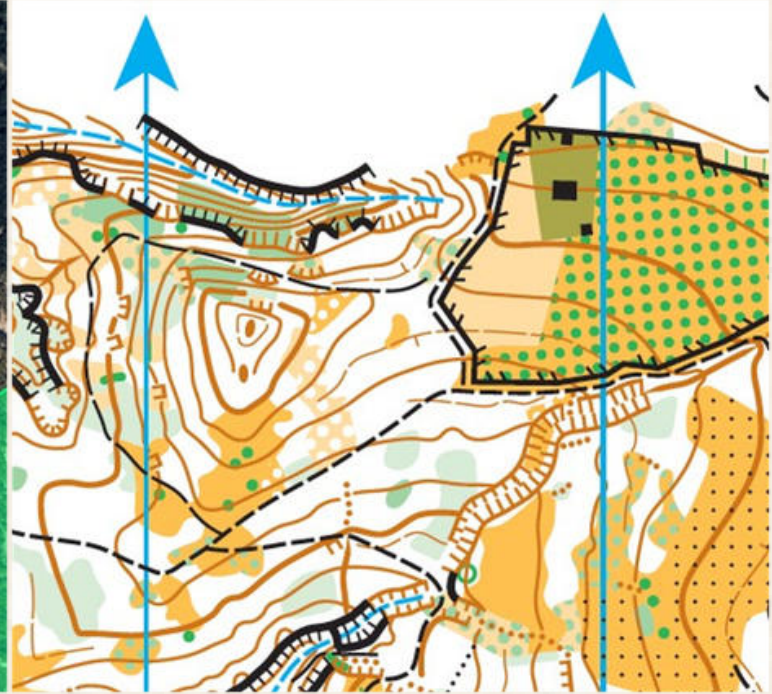
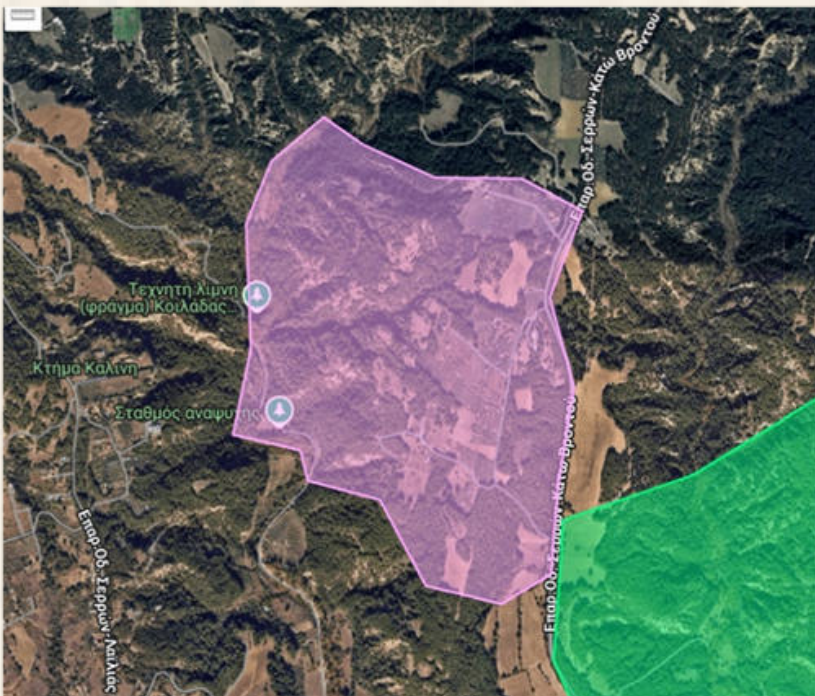
## Tuesday 13 October 2026, training opportunity

Map : Agioi Anargiroi valley (2-3km from Serres)

Scale : 1:10.000, contours : 5m

Area mapped first in 2019. Mean altitude 160m

Description : pine tree forest with open lands, hilly terrain with reach relief. There are various farms and cottages around. There are many impassible cliffs, be careful!



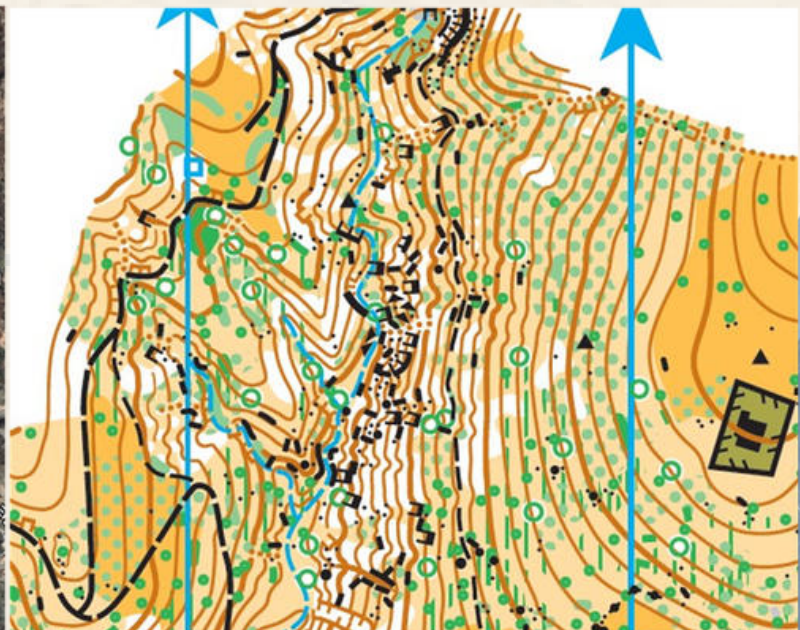
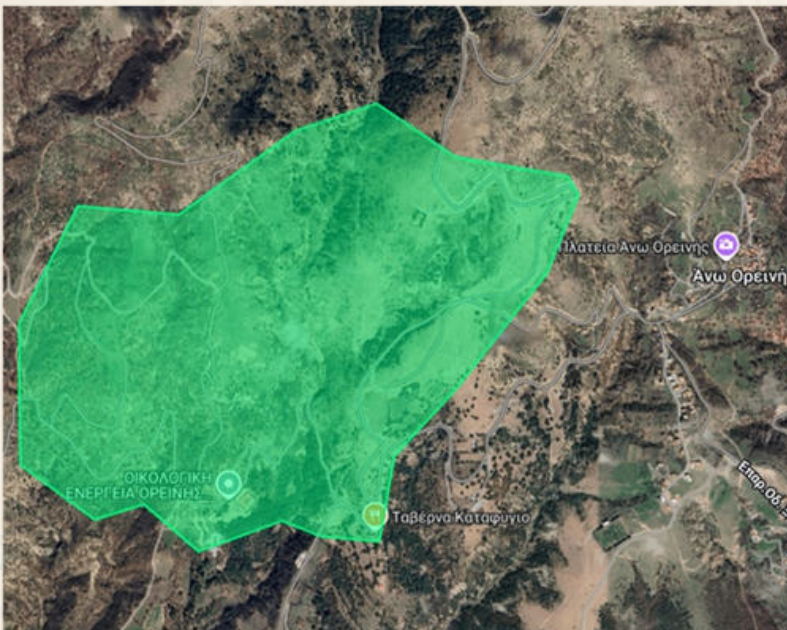
## Wednesday 14 October 2026, Middle distance

Map : Nerotopos (14<sup>th</sup> km from Serres to Lailias Ski Center)

Scale : 1:10.000, contours : 5m

Area mapped first in 2021. Mean altitude 850m

Description : Open land with scattered trees and bushes, hilly terrain with reach relief and various rocky formations



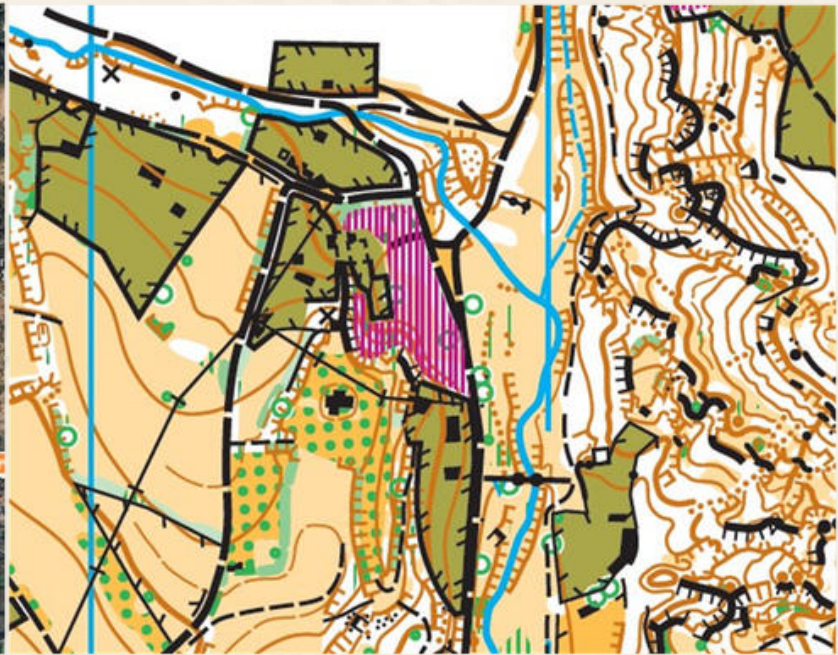
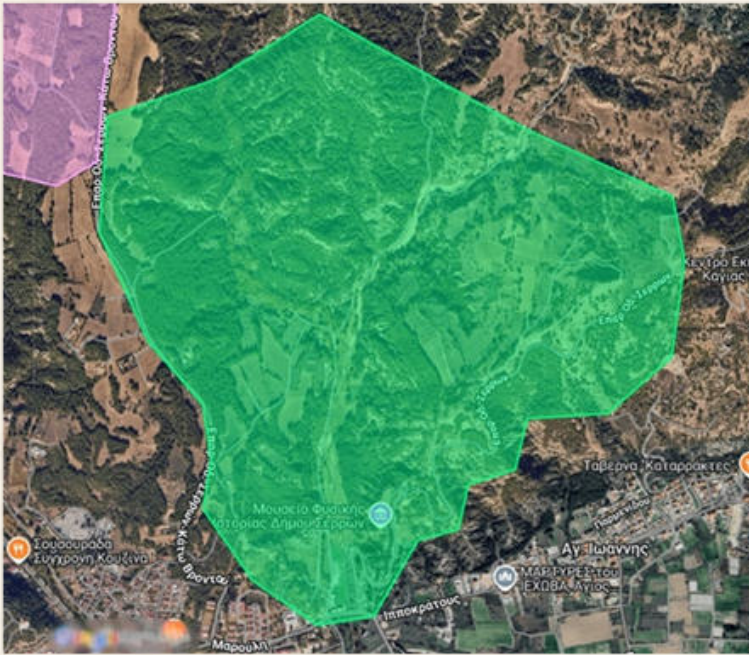
# Thursday 15 October 2026, Long distance

Map : Ai Giorgis valley (1-2km from Serres)

Scale : 1:15.000, contours : 5m

Area mapped first in 2017. Mean altitude 160m

Description : pine tree forest with open lands, hilly terrain with reach relief. There are various farms and cottages around. There are many impassible cliffs, be careful! A small crossable stream crosses the map from north to south.



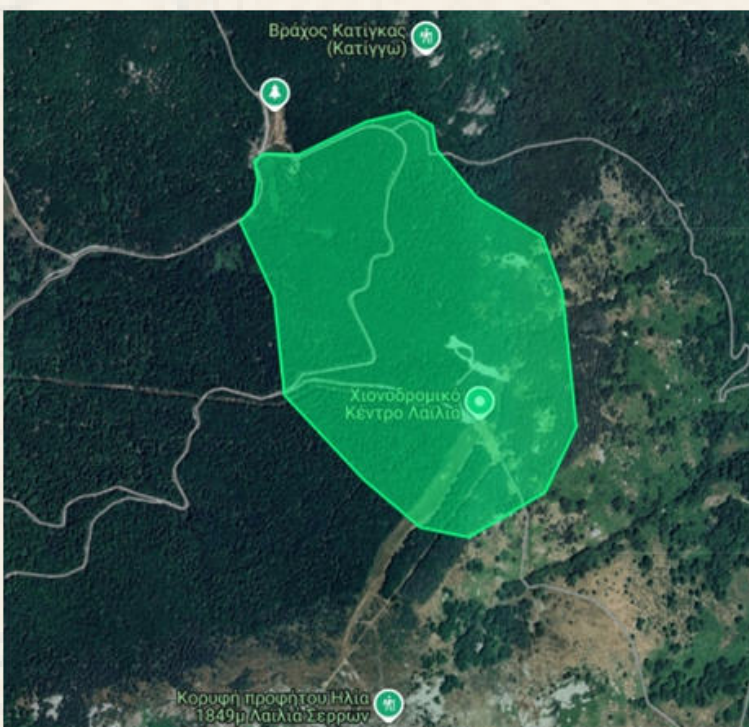
# Saturday 17 October 2026, Relay

Map : Lailias Ski Center (28 km from Serres)

Scale : 1:10.000, contours : 5m

Area mapped first in 2021. Mean altitude 1580m

Description : Beech tree forest mainly with scattered pine trees and other coniferous trees. Good runnability in the forest. Hilly terrain with reach relief and minor rocky features.



## 5. Opportunities for training

The organizers in cooperation with orienteering club O-Siris plan to organize a 2-3 days camp, in a similar terrain of relay competition, on 26-28 June 2026. Except these days, teams and individuals could ask for an analogous training session upon request. For inquiries, send an email to [sirisoc@proton.me](mailto:sirisoc@proton.me). For more information, please follow O-Siris' social media.

<https://www.facebook.com/OClubSiris>

<https://www.instagram.com/oclubsiris>

## 6. Punching system

SPORTIdent AIR+ punching system will be used. SI cards can be rented for 4 EURO/day (for all days). SI cards will be in limited quantity; thus, it is better to hold your own one.

## 7. Weather and climate

October is a dry month for Serres with plenty of sun. Expect a mean temperature of 14-15C<sup>0</sup>, mean max 20-21C<sup>0</sup> and mean low 8-9C<sup>0</sup>. These conditions apply for terrains next to Serres. Middle distance and Relay distance areas would be colder due to higher altitude.

## 8. Clothing

Long trousers and trail running shoes are recommended for all events. A hat will protect you from the sun. Spiked shoes are allowed. Athletes' bib numbers shall be clearly visible in the chest.

## 9. Event Center

Event center will be hotel Philippos Xenia at the east side of Serres (**str. Agias sofias 1**)

 <https://shorturl.at/wVBPk>

Team accreditation and team officials meeting will be held at the event centre.

## 10. Entries

**Preliminary entry - Form 1** - 20.01.2026

**Final entry - Form 2** - 14.04.2026

**Provisional Name List - Form 3** - 14.07.2026

**Final List - Form 4** - 14.09.2026

**Hotel reservation form and deposit:** end of June 2026

**Hotel payoff and final reservation list :** 20-9-2026

# 11. Entry fees and payment

## Accommodation

Offers from Hotels:



## Hotel A : Siris Hotel

<https://maps.app.goo.gl/Xjhc4316ojtC1LxCA>

Single room :110 € , FB/night

Double room :129 € , FB/night

Triple room :142 € , FB/night

Bank deposit can be made to the following account:

PIRAEUS BANK

Account No.: 6183 1082 13 255

IBAN: GR63 0171 1830 0061 8310 8213 255

Beneficiary: SIRIS HOTEL – HOTEL & TOURISM ENTERPRISES S.A.

Reservations e-mail: [reception@sirishotel.gr](mailto:reception@sirishotel.gr)

tel:+302321038200

Reservations can be made either by telephone or by email to the hotel, with reference to the championship in order to secure the agreed rate.

## Accommodation



### Hotel B : PHILIPPOS Xenia Hotel

<https://maps.app.goo.gl/HcfqsdQv4UqhxdTFA>

Single room : 121 €, FB/night

Double room : 171 €, FB/night

Triple room : 213 €, FB/night

Bank deposit can be made to the following account:

PIRAEUS BANK: 5257-032459-152

PIRAEUS BANK IBAN: GR0501722570005257032459152

Accepted credit cards: American Express, Visa, Mastercard

Reservations e-mail : [info@philipposxeniahotel.gr](mailto:info@philipposxeniahotel.gr)

tel. : +30 23210 99360

tel. : +30 23210 99361

Reservations can be made either by telephone or by email to the hotel, with reference to the championship in order to secure the agreed rate.

## **Accommodation for training camp**

There is a possibility of camping next to the mountaineering refuge of Lailias with a limited space. There are also a few multiple bed rooms available (20€ per person/per night). For inquiries, please get in contact via social media or mobile telephone : +306934 618 387 (Manos Gotzinis).

[https://www.instagram.com/refuge\\_lailias\\_1500](https://www.instagram.com/refuge_lailias_1500)

<https://maps.app.goo.gl/Sw5UpSzKMouzYpASA>

Training camp will be held in the surroundings of the refugee.

## **Entry fees**

Entry fee per participant **100,00€** (for athlete, official, trainer, etc)

It includes organizing expenses, maps, number bibs, first aid services, etc

Entry fee for juniors **50,00€** (up to 20 years old)

Entry fee for EDSO **30,00€**/person. (direct payment upon arrival to EDSO delegate)

## **Transportation**

Bus ticket **50€** / person

It includes : from Thessaloniki (Macedonia airport) to Serres, middle distance, Relay, touristic excursion, way back from Serres to Thessaloniki (Macedonia airport). You will be informed about the transportation schedule in the coming period.

**Payment information :** For entry fees and transportation

Account (IBAN): GR2301401010101002002352086

Beneficiary: Hellenic Sports Federation of the Deaf (H.S.F.D.)

Bank Code (BIC): CRBAGRAA

Owner of the account : Hellenic sports federation of the deaf

Deposit 30% : until end of June 2026

Payoff 70% : until 20-9-2026

## 12. Accreditation

Official accreditation will be available on Monday 12 Oct. in the evening and on Tuesday 13 Oct. all day at the event center.

## 13. Anti - doping

All participants will follow valid WADA (World Anti-Doping Agency) regulations, ICSD (International Committee of Sport for the Deaf) Anti-Doping regulations and the International Orienteering Federation Anti-Doping Rules.

## 14. Health services

The Event Organizer will coordinate healthcare service for participants and will provide first-aid at each competition area. The Event Organizer will not bear any responsibility related to the cost of medical services of the participants. Each Federation is responsible for the health insurance of all their athletes and delegates.

Hospital of Serres : <https://maps.app.goo.gl/PqdcuZGzdFgcutT46>

National center for immediate assistance : call 166 or 112

## 15. Visa

Please check the following link with a list of countries whose citizens require a visa to enter Greece /Schengen Zone:

<https://www.mfa.gr/en/services/visas-for-foreigners-traveling-to-greece/>



**EDOC 2026**

